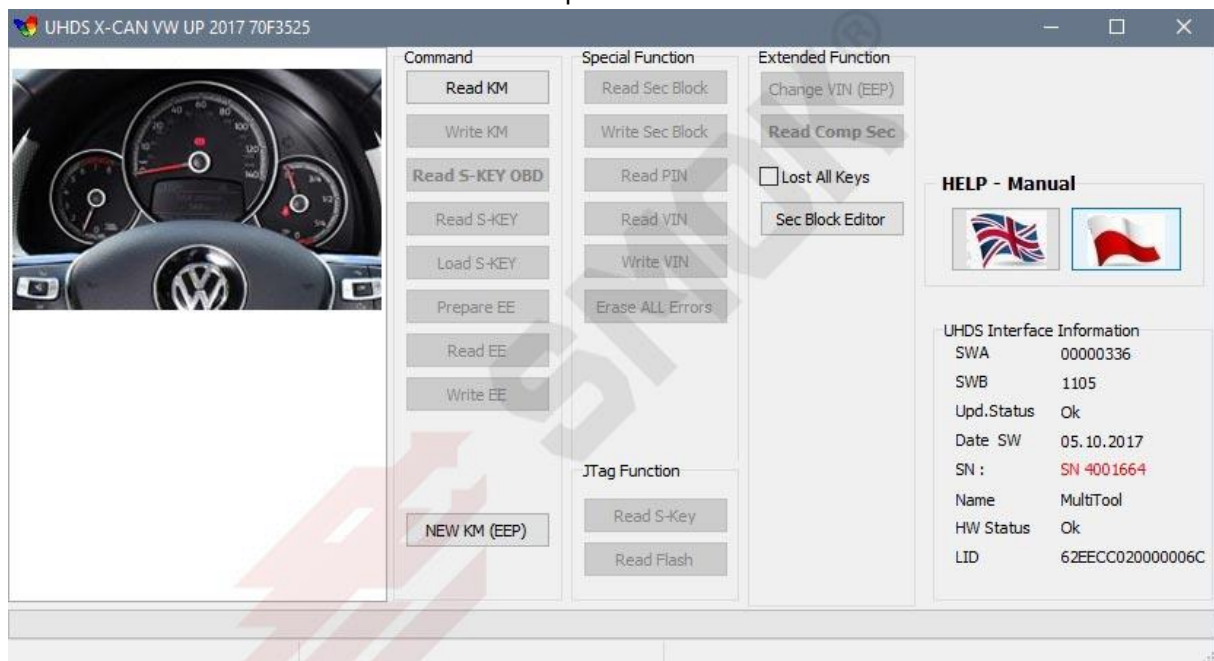
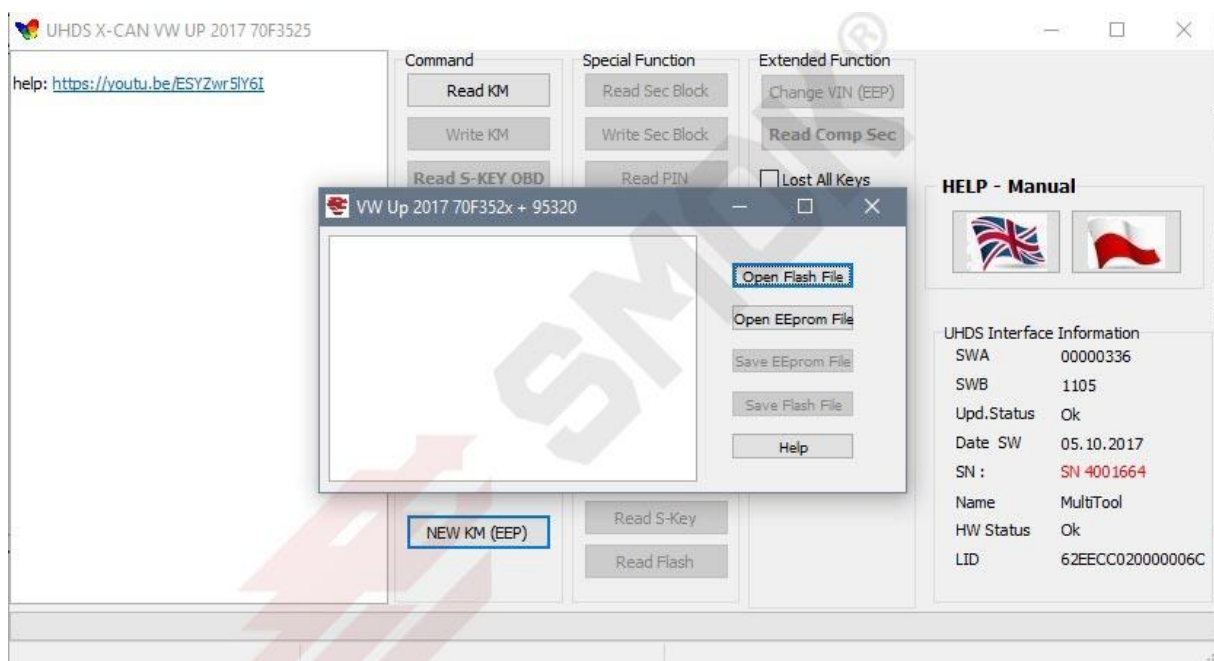


1. Read the content NEC D70F3525 in the dash (you can use Interface JTAG with the option VW0022).
2. Read the content of the memory of eeprom 95320 (you can use SmokProg programmer)
3. Use the Multitool Interface UHDS with the option VW0034



4. Choose function NEW KM (EEP)



5. Use function "Open Flash File" and point out the original EEprom filed which was saved and read from the dash.
6. Use function "Open EEprom File" and point out the original EEprom file which was read from the dash.
7. Use function "Save EEprom File"

8. Read new KM and save the eeprom file
9. Use function "Safe Flash File: and save the new flasf file
10. Upload the new eeprom file to the 95320 memory (you can use SmokProg programmer)
11. Upload the ne flash file to NEC D70F3532 (you can use Interface JTAG with the option VW0022)
12. Connect the power supply and CAN. What is more check the new value of KM