

Kia_Ceed_DNPO_RH850_ 2021

Table of contents

Getting Started	3
System requirements	3
Getting help	3

Getting Started

System requirements

Required:
UHDS Interface
Jtag programmer
Licence JG0025 (Jtag)
Licence KA0013

Getting help

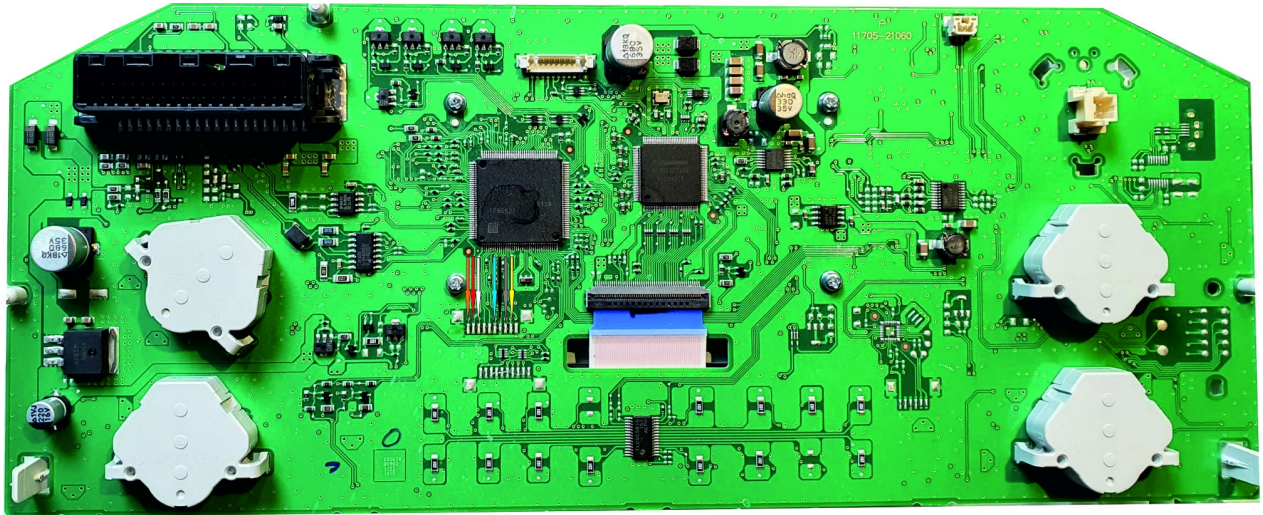


Change Km value is possible by CAN (dash connector)
First required is prepare MCU by Jtag.

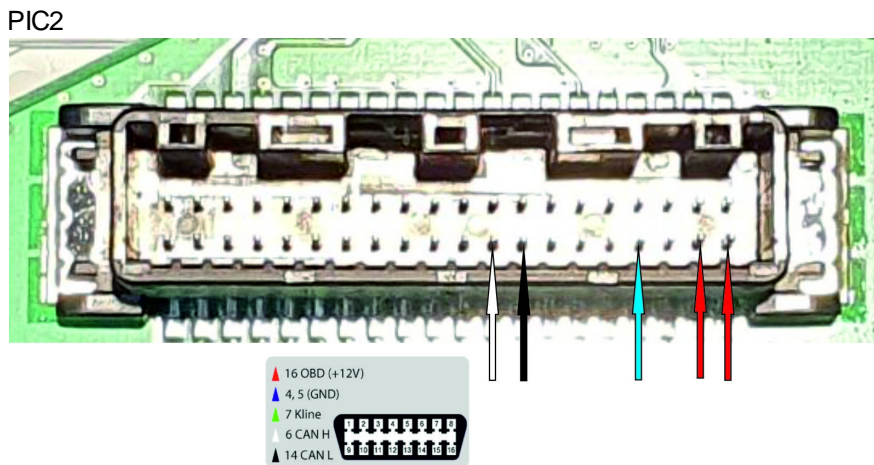
1. Connect Jtag as on picture PIC.1 . Connect UHDS and Jtag to your computer , select Kia Ceed RH850 DNPO 2021... and press button "Prepare DataFlash".

When it finish success you can desolder Jtag wries.

2. Connect UHDS to dash connector as on picture pic.2. Press write Km.



PIC1



PIC2